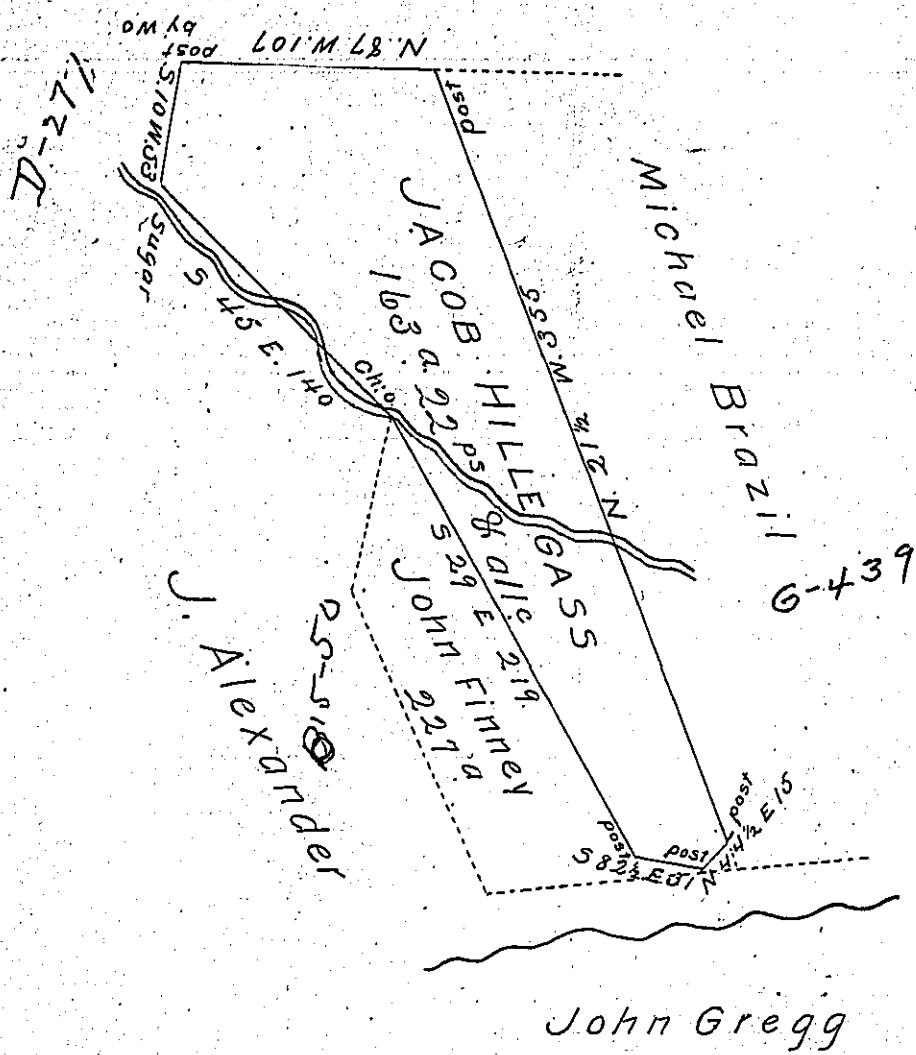


722-210 #377-773 m

John McClelland  
now James Burns



Situate on the Waters of Shawanese Cabin  
Creek in Napier Township Bedford County  
being part of a larger tract of 227<sup>ac</sup> of land  
Surveyed to John Finney on W<sup>t</sup> dated Augt.  
10th 1765.

Resurveyed the 20<sup>th</sup> day of October 1836 for  
Jacob Hillegass containing 163<sup>ac</sup> 22<sup>ps</sup> and  
Allowance of Six per Cent & C.

Wm. S. Vickroy D.P.

To John Taylor Esqr.  
S. J.

IN TESTIMONY that the above is a copy of the original remaining on file in  
the Department of Internal Affairs of Pennsylvania, made  
conformably to an Act of Assembly approved the 16th day of  
February, 1833, I have hereunto set my Hand and caused  
the Seal of said Department to be affixed at Harrisburg,  
this fourth day of January 1904

*Lucas R. Brown*  
Secretary of Internal Affairs.